

# E-MAGINE

e-Newsletter of **RAUCH inc**



*Imagine a Community Where Everyone Belongs...*

## **ADA-ACCESS Christmas Potluck**

Each year ADA and ACCESS clients and staff look forward to the annual Christmas Potluck.

This year was extra special. Santa himself took time out of his busy schedule to stop by the party to pose for pictures and to hear some last minute Christmas wishes; he also helped distribute presents to all of the clients. As Santa left for the North Pole, the feast began as tables were called to go through the buffet line. There was fried chicken, green beans, mashed potatoes, corn, and every type of dessert imaginable! As the party began to wind down, door prizes were awarded and carols were sung.

The First Church of God, at Charlestown Road & Silver Street, allowed us use of their banquet hall. Generous

## **We Met our Match!**

In the November edition of E-MAGINE, we told you about our Building Blocks Comprehensive Campaign. At that time, we were less than \$2,000 from reaching the \$3,000,000 level in pledges and one-time gifts needed to receive a \$100,000 matching grant from the Ogle Foundation.

**Thanks to the generous support we received from community members like YOU, the campaign total is currently at an amazing \$3,021,385!! Our Ogle Foundation grant funds are on their way!**

We have, quite simply, been overwhelmed by the community's support of Rauch in 2011. To date, a remarkable 150 individuals, client family members, businesses, and foundations have made the success of the Building Blocks Campaign a reality. For that, **we cannot THANK YOU enough!**

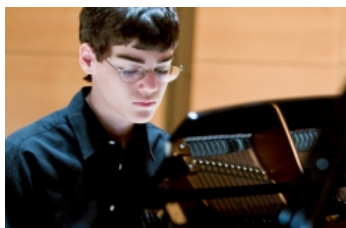
Rauch still has additional funding needs beyond the current campaign total, and we continue to work to raise funds to ensure we are able to meet all of our goals. In addition to the construction of the clubhouse and park at Hawthorn Glen, we are seeking funds to:

- Implement a desperately needed new telephone system
- Install air conditioning at Rauch Industries
- Increase security and functionality by remodeling the entrance to Rauch Industries

contributions from friends and families made this year's potluck possible; we are truly grateful for those gifts.



*Above: Sandy Braunbeck, Director of ADA & ACCESS, whispers her Christmas list into Santa's ear. Below: Bob enjoys the potluck fare with his mom.*



*Matt Savage*

- Upgrade lighting at Rauch Industries for better quality light and increased energy efficiency
- Purchase two new vans for transporting clients, a forklift for Rauch Industries, and furnishings for the clubhouse and four new homes at Hawthorn Glen

**Just under \$24,000 in additional dollars is needed to accomplish these goals for the betterment of our current and future clients.** If you have not contributed to our campaign, there is still time to help and to receive benefits on your 2011 taxes. You can do so by [donating online now](#) or simply writing a check. Make sure your envelope is postmarked by December 31. If it is, your gift will qualify as a year end gift even if it is not received by Rauch until the first week of the new year. If you itemize your tax deductions, gifts of cash may be fully deductible up to 50% of your adjusted gross income.

Rauch, Inc. would be pleased to provide you, your attorney, your accountant or your tax advisor with additional information and assistance. **For more information about gift options, contact Teresa Jackson, Director of Development, at [tjackson@rauchinc.org](mailto:tjackson@rauchinc.org) or 812-945-4063.**



I m a g i n e  
*Awards*

The Rauch Foundation, Inc. will present the 2012 Imagine Awards at Horseshoe Southern Indiana on Saturday, March 3, 2012. The festivities will begin at 5:30 p.m.

The 2012 event will feature acclaimed **jazz pianist Matt Savage**. At age 3, he was diagnosed with a high-functioning type of autism. Following several years of intense therapies, Matt taught himself to read and play piano music overnight. He is currently studying at Berklee College of Music in Boston.

Matt will also be joined on stage by world-renowned jazz saxophonist, music educator, and local



Jamey Aebersold

## HORSESHOE FOUNDATION OF FLOYD COUNTY

The Horseshoe Foundation of Floyd County awarded Rauch a generous grant of \$9,850 as a match to purchase a new van. With this grant, the Horseshoe Foundation will enable us to retire an old van and provide reliable and accessible transportation to and from our new housing development in the Hawthorn Glen subdivision. We deeply appreciate the support of the Foundation. **Thank you!**

Dear  
Santa,

### Wish List:

Bottled water  
Body wash  
Deodorant  
Detergent  
TARC tickets  
Resume paper  
Office supplies  
Disposable

favorite **Jamey Aebersold**. Information on event sponsorships, tables, or individual tickets is available at [www.imagineawards.org](http://www.imagineawards.org) or by contacting the Development office at 812-945-4063 or [tjackson@rauchinc.org](mailto:tjackson@rauchinc.org).



## Hawthorn Glen Phase II Open House

Join us on **Tuesday, January 31, 2012**, at Hawthorn Glen subdivision to see the latest edition to Rauch's Supported Living program! The homes will be open from **11:00 a.m. to 6:00 p.m.** for tours and light snacks.

Hawthorn Glen subdivision is located at Hwy 403 and Salem Noble Road in Sellersburg, Indiana. In November 2010, the first residents moved into the new housing development which, when completed, will consist of a clubhouse, park and 18 homes that will house 54 individuals with disabilities and provide round the clock care.

For more information on the open house or the housing development, please contact Teresa Jackson at [tjackson@rauchinc.org](mailto:tjackson@rauchinc.org) or Lindsey Davis at [ldavis@rauchinc.org](mailto:ldavis@rauchinc.org).

Look what Rauch's clients  
have been up to!



dinnerware  
 Wii games  
 Large flat screen TV  
 Admission to local:  
 museums, ball  
 games, movies,  
 attractions  
 Staff rewards:  
 movie passes  
 store/restaurant  
 gift cards  
 iPads  
 Computers/netbooks  
 Playground equipment  
 Art canvas  
 Wooden chairs  
 Neck ties  
 Crayons  
 Coloring books  
 New toys/stuffed animals  
 Diapers and wipes

**Volunteers:**

We're always happy to accept volunteers to:

- Read to clients
- Present to clients about music, dance, & fitness
- Professionally photograph our clients
- Organize & inventory donations

**Donate Now**  
 Secure donations through  
 Network for Good



*Bill met Santa at the potluck and received a gift.*



*I wonder if Tim will end up with coal in his stocking?  
 From what his shirt says, I'd say that's a safe bet!*



*Diane and Santa smile for the camera!*

9/19/13

Campaigns : Campaign Preview

This email was sent to . To ensure that you continue receiving our emails, please add us to your address book or safe list.

[manage](#) your preferences | [opt out](#) using **TrueRemove™**

Got this as a forward? [Sign up](#) to receive our future emails.

